

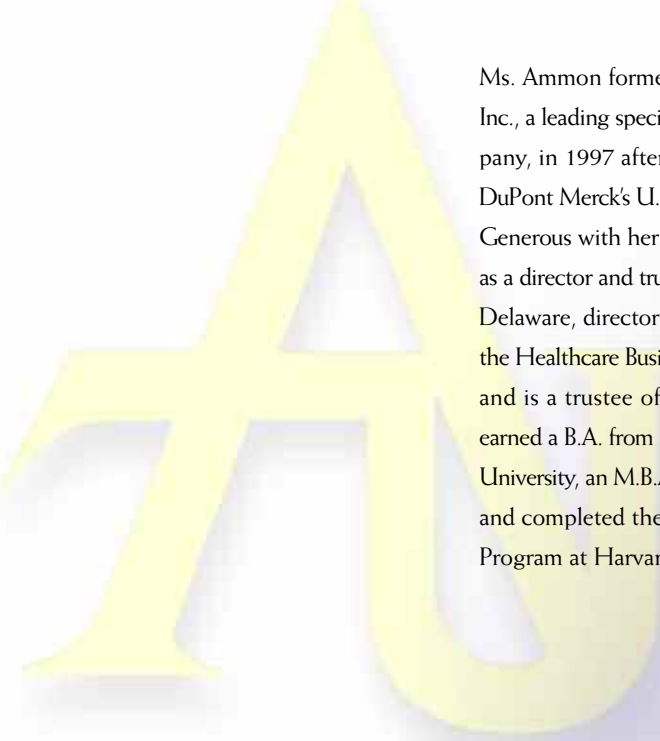
University News

Carol A. Ammon M.B.A. '79, founder and chairman of the board of Endo Pharmaceuticals Inc., and **Robert B. Willumstad '05 (Hon.)**, former president and chief operating officer of Citigroup, Inc., have been elected to the Adelphi University Board of Trustees.

Ms. Ammon formed Endo Pharmaceuticals Inc., a leading specialty pharmaceutical company, in 1997 after serving as president of DuPont Merck's U.S. Pharmaceutical Division. Generous with her time, she presently serves as a director and trustee of Christiana Care of Delaware, director on the advisory board of the Healthcare Businesswomen's Association, and is a trustee of Drexel University. She earned a B.A. from Central Connecticut State University, an M.B.A. from Adelphi University, and completed the Advanced Management Program at Harvard University.



Robert B. Willumstad '05 (Hon.)

Named president of Citigroup, Inc. in 2002, Mr. Willumstad became chief operating officer a year later. He also served as CEO and president of Citibank NA. From 2000 to 2003, he was the chairman and CEO of Citigroup's Global Consumer Group. Respected for his public service as well as his business successes, he was presented with the Frederick Douglass Award by the New York City Urban League in 2002, and currently serves as a board member and volunteer for Habitat for Humanity International. Having attended Adelphi as an undergraduate, he received an honorary degree from the University in 2005. 




Carol A. Ammon M.B.A. '79

We welcome your thoughts and comments. Please address letters to: **Bonnie Eissner**, editor-in-chief, **Adelphi University Magazine**, Adelphi University, Levermore Hall, Room 205, One South Avenue, P.O. Box 701 Garden City, NY 11530, or email EISSNER@ADELPHI.EDU.

Letters may be edited for publication.

Correction

A photograph that ran with an article on the donation of Timothy Lester Woodruff's papers to Adelphi was actually of George Hubbell, Chairman of the Adelphi Board of Trustees from 1939–1940. Timothy Woodruff is pictured here.

We regret the misspelling of the name of the Woodruff papers collection. It is *The Hugh Allen Ward and Winifred Alling Ward Keith Collection of the Papers of Timothy L. Woodruff*. 



Editor's Note

Worthwhile Pursuits

By Bonnie Eissner
Editor-in-Chief


Born just last year, my son is still too young to ask, but someday he will want to know what I do for a living.

I look forward to telling him that I work for a place that makes peoples' lives better.

As you'll read, Adelphi faculty have dedicated their scholarship and teaching to helping children, and their families, thrive. The faculty profiled in our cover story and their colleagues across campus are seeking new and better ways to teach children, ensure their emotional and physical health, and help their parents care for them.

Assistant Professor of English Adam McKeown not only served our country last year as a Marine stationed in Djibouti, Africa, but carried his love of teaching overseas where he created and led a free Shakespeare course for Adelphi credit to fellow service members.

Stories of selflessness and generosity abound in this issue. You'll read about donors who've made meaningful gifts of all sizes, including one very special one that has made Adelphi history. Adelphi nursing student Gretel Jugl '07 gave her time and expertise, even at great personal risk, to aid Katrina victims. Angela Greco '94, M.S.'97 received a Presidential Award for Excellence in Mathematics and Science Teaching for giving her fourth grade students the gift of a life of inquiry and exploration.

As always, these stories are representative of a larger whole. I hope that you enjoy reading them as much as we have enjoyed sharing them. And continue to tell us your news. 



"Carol Ammon's gift speaks to her true generosity of spirit and dedication to success—her own and that of others,"

— President Robert A. Scott



Ruth S. Ammon '42



Extreme makeover



ADELPHI UNIVERSITY RUTH S. AMMON SCHOOL OF EDUCATION

- ① Performing Arts Center
- ② Recreation and Sports Center
- ③ Woodruff Hall Renovation
- ④ Outdoor Sports Stadium/Parking Structure
- ⑤ Early Learning Center
- ⑥ Parking Grove
- ⑦ Recreation and Sports Center Entry Plaza
- ⑧ Performing Arts Center Entry Plaza

ADELPHI EDITION

Long known for its excellence in preparing teachers, the School of Education has been named for one.

Born in 1919, Ruth S. Ammon '42 was a gifted second grade teacher and an inspiration to her daughter, Adelphi University Trustee Carol A. Ammon M.B.A. '79, founder and chairman of Endo Pharmaceuticals Inc.

With her daughter's generous \$8.5 million commitment to the University, which among other things will support campus facilities, an endowed faculty chair, and student scholarships in the School of Education, Adelphi has named the School in Ruth Ammon's honor.

"My mother gave me the courage to set my aspirations high," said Carol Ammon. "She always helped me and all her students achieve their best. My family is ever grateful to Adelphi for shaping such a rewarding and successful teaching career."

With the Ammon gift, Adelphi has established the Ruth S. Ammon Chair in Childhood Education, the first fully endowed faculty chair in the School of Education, which will support a distinguished faculty scholar and teacher. The Ruth S. Ammon Scholarship Endowment will support undergraduate and gradu-

ate scholarships for education students. Additional funding from the gift will support campus enhancements.

"Carol Ammon's gift speaks to her true generosity of spirit and dedication to success—her own and that of others," said Adelphi University President Robert A. Scott. "The Ruth S. Ammon School of Education will continue to set precedents in preparing educators who challenge, inspire, and change the world. Each day over 100,000 New York State school children, from the suburbs to the inner-city, are taught by Adelphi education graduates."

Recently named to the Adelphi University Board of Trustees, Carol Ammon has been widely profiled and lauded for her success in launching and leading Endo Pharmaceuticals Inc., a market leader in pain management. In an interview in the fall 2004 issue of *Adelphi University Magazine*, Ms. Ammon said of her company's culture and mission, "All of the employees at Endo believe they can make a difference in people's lives. To have a prosperous company where you get to work with talented and fun people and where you can make a difference, it doesn't get much better than that."

Ms. Ammon has made a remarkable difference at Adelphi. 

Three years from now, Adelphi's Garden City campus will look quite different.

In March 2006, Adelphi broke ground on its most ambitious campus enhancement project since moving to Garden City in 1929. Years in planning, the project will bring a new multiple-building instructional, performing arts, and recreation complex to the eastern side of the Garden City campus, as well as other additions and improvements.

"If Adelphi is to remain one of the foremost private institutions of higher education in the region—known for the competence of its graduates, its strong programs and interdisciplinary orientation, its welcoming of the community onto campus, and its impact on the broader society—it must evolve to better meet the needs of its current students and the community," said Adelphi University President Robert A. Scott.

The recreation and performing arts complex will encompass a complete renovation of

Adelphi's historic Woodruff Hall gymnasium, which will be adapted for thriving academic programs in health and physical education, and will include approximately 76,000 square feet of new construction to house growing and increasingly successful athletic and recreational programs. Stiles Field will be relocated next to the new center and will be resurfaced with an artificial turf playing field. The design will also allow for below-grade parking.


A new performing arts center will include an upgrade of Adelphi's 31-year-old Olmsted Theatre as well as approximately 53,500 square feet of new space. The new center will offer needed performance, rehearsal, and classroom space for well regarded programs in theater, dance, and music, and will serve as a new cultural arts venue to be enjoyed by members of the Adelphi community and area residents.

The University will also replace the 32-year-old structure for its popular Child Activity Center with a new state-of-the-art building. The new center will be devoted to the education of pre-

school children from across the region and will be closely connected with undergraduate and graduate programs in early childhood education, special education, and psychology.

Geothermal heating and cooling used in the new construction will reduce the University's reliance on fossil fuels, and a landscaped parking grove between Woodruff Hall and Hagedorn Hall will add more trees and greenery to campus.

The approximately \$94 million project, planned for completion in 2008, will be supported through an integrated funding strategy of private philanthropy, bond sales, and New York State matching funds.

To learn more about the project and follow its development, visit WWW.ADELPHI.EDU/BUILD.AU. 



In Their Own Words

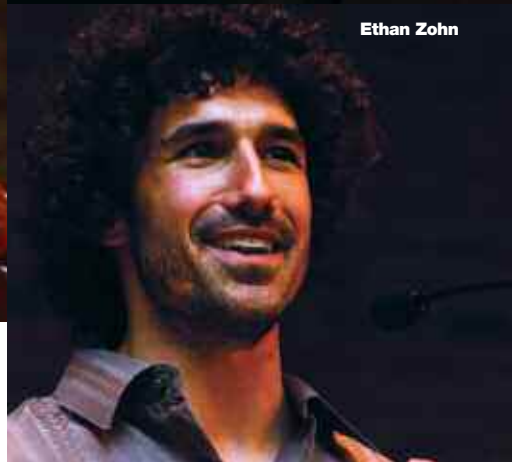
Fall Semester Lectures 2005



Peter G. Peterson



Josh S. Weston



Seymour Hersh

Ethan Zohn



Mustapha Tlili



Seymour Hersh

September 14, 2005

Chain of Command: The Road from 9/11 to Abu Ghraib

Acclaimed investigative reporter Seymour Hersh is a regular contributor to the *New Yorker* and an authority on military and security matters. The author of eight books and winner of the Pulitzer Prize, he previously served as a correspondent for the United Press International in South Dakota, Chicago, and Washington, D.C.; correspondent for the Associated Press; and a *New York Times* Washington Bureau reporter.

"The basics that we need in our society to get along, our day-to-day basics, what are they? Integrity, trust, not lying, having someone with whom you can always be honest and straightforward—requirements we all

need... Everyone in the world has the same requirements, even Iraqis, even Shiites, and Sunnis. And yet what we demand in our personal life, and which we need in our personal life, none of us have any realistic expectation of holding the highest officials in the government to the same standards. We've come to understand that it's an impossibility."

Peter G. Peterson

September 19, 2005

Running on Empty

Sponsored by the Hagedorn Lectureship on Corporate Social Responsibility and presented by Bank of America

Senior chairman and co-founder of The Blackstone Group, Peter G. Peterson serves as chairman of the Council on Foreign Relations, chairman of the Institute for

International Economics, and president of The Concord Coalition. He previously served as chairman of the Federal Reserve Bank of New York, as well as secretary of commerce under President Richard Nixon.

"We have to ask, has this country reached the point where there's never a time when we can ask people to give up something for the general good? Look where we are now. We're fighting a war; we've got Katrina, and the significant item on too many politicians' agendas is we have to make these tax cuts permanent. So there's something fundamental that universities such as yours should be looking at: How did this country go from my parents' generation, which sacrificed for their children ... to where we are today?"

Mustapha Tlili

November 21, 2005

Islam and the West: A Clash of Civilization or a Clash of Perception

Sponsored by the William E. Simon Lecture in American Civilization

Sorbonne-educated Mustapha Tlili is founder and director of New York University's program, Dialogues: Islamic World-U.S.-The West; a senior fellow at the Remarque Institute of New York University; and an NYU research scholar. He is a former senior United Nations official, having served the organization in various capacities over a long career.

"If we turn a blind eye to the deep inequalities of power in the world today, we may in

fact then be unable to proceed and thus to effectively deal with the critical mechanisms pushing us towards a clash of civilizations. If we leave out the question of power, we may be unable to adequately understand and to cope with what could very well turn out to be a central cause of violence and religious extremism in the world today."

Josh S. Weston

October 6, 2005

Leadership and Integrity from a CEO's Perspective

Sponsored by the Hagedorn Lecture on Corporate Social Responsibility

Chairman, CEO, and COO of Automatic Data Processing, Inc., Josh S. Weston has served on the boards of Boys Town Jerusalem, Liberty Science Center, International Rescue Committee, New Jersey Symphony Orchestra, United Nations Association, and Channel Thirteen. After graduating *magna cum laude* from City College, he served in the Navy and currently holds four honorary doctorates.

"We live in a society with so many decibels of verbal communication and so many pieces of paper and blogs and email, that if something important is said just once, you [haven't] really communicated."

Ethan Zohn

November 1, 2005

Since being declared the winner of CBS's *Survivor: Africa*, Ethan Zohn has founded Grassroot Soccer, a non profit organization that trains Africa's professional soccer players to teach children about HIV/AIDS prevention. He recently launched KickAIDS, a U.S.-based HIV/AIDS fundraising awareness campaign.

"Find something that makes your heart break and then join an organization that's dedicated to helping that out, because during my entire experience I learned that to make happiness real for others is truly the greatest gift."

For information on upcoming lectures and cultural events, visit [HTTP://EVENTS.ADELPHI.EDU/](http://events.adelphi.edu/)



Amy Maiello Hagedorn '05 (Hon.) and other area leaders discuss looming changes for Long Island nonprofits.



Long Island Community Foundation Executive Director Suzy Sonenberg M.S.W. '76 advises area nonprofit leaders on succession planning.



Dean Andrew S. Safyer opens nonprofit leadership summit.

NONPROFIT LEADERS

THE NEXT GENERATION

Research suggests that 70 percent of the 8,000 nonprofit organizations on Long Island will face leadership transitions within the next ten years.

"They're calling it the graying of the nonprofit leadership on Long Island and elsewhere," said Don Crocker, executive director of the Support Center for Nonprofit Management, the keynote speaker at November's Long Island Nonprofit Leadership Summit, *Change is Coming!* Conceived by School of Social Work Dean Andrew S. Safyer and a steering committee of nonprofit executives, the summit was the first such gathering on Long Island to address the urgent need for area nonprofits to cultivate future leaders.

The day-long conference, which garnered a feature story in *Long Island Business News*, brought together more than 250 nonprofit executives and expert panelists, including Suzy Sonenberg M.S.W. '76, executive director of the Long Island Community Foundation, and Richard P. Dina D.S.W. '92, former executive director of the Family and Children's Association. (Dr. Dina joined Adelphi in January 2006 as senior advisor for University Advancement.)

The day-long conference, which garnered a feature story in *Long Island Business News*, brought together more than 250 nonprofit executives and expert panelists, including Suzy Sonenberg M.S.W. '76, executive director of the Long Island Community Foundation, and Richard P. Dina D.S.W. '92, former executive director of the Family and Children's Association. (Dr. Dina joined Adelphi in January 2006 as senior advisor for University Advancement.)

Shame of the Suburbs

"We should know by now that neither schooling nor war can be successful when done on the cheap," said President Robert A. Scott speaking at Adelphi's *Shame of the Suburbs* panel. Convened in November 2005 and moderated by *Newsday* columnist Larry C. Levy, the panel examined the state of Long Island public education one year after Mr. Levy exposed the school system's shortcomings and challenges in his "Shame of the Suburbs" series. Panelists included Commissioner of Education Richard P. Mills, Valley Stream Superintendent Lawrence R. McGoldrick, and Nassau County Community College Director of College/Community Relations Reginald Tuggle. All agreed that while significant progress had been made, further improvements were needed. **A**



Horace G. McDonell, Jr. '52, '02 (Hon.) and Eileen Romar McDonell

Strong Bonds Mean Great Chemistry (and Physics)

Former Trustee Horace G. McDonell, Jr. '52, '02 (Hon.) credits Adelphi with giving him the "strong scientific foundation" on which he built an impressive career.

Soon after earning his B.A. in physics, he joined the Perkin-Elmer Corporation, a leader in the fields of analytical instruments, fine optics, and electro-optical systems. He stayed for thirty-eight years, rising to chairman and CEO.

Through a generous \$1.1 million gift last spring, the largest from a living alumni couple and Adelphi's fourth commitment of a million dollars or more in three years, he and his wife Eileen are helping to ensure that generations of Adelphi students benefit from the same strong foundation in the sciences. An overhauled general chemistry lab, the McDonell Chemistry Laboratory, opened this spring, and additional scholarship money is now available for physics students.

Just about everything in the bright, modern lab, from plumbing and flooring to benches and cabinets, is new. It features the latest in digital equipment, including twelve digital balances and twenty-four computers in an adjacent space. A more open layout facilitates student teamwork, and two new workstations accommodate students with disabilities.

"My wife Eileen and I are thrilled to partner with Adelphi to ensure that the sciences remain vibrant, robust, and affordable for today's students," said Mr. McDonell.

In recognition of his numerous contributions to the University, the scientific community, and the community at large, Adelphi awarded Mr. McDonell an honorary doctorate in May 2002.

"We are grateful to the McDonells for their support, friendship, and leadership in helping Adelphi continue its record of excellence in the sciences and create new opportunities for students," said Adelphi University President Robert A. Scott. **A**



Newsday columnist Larry C. Levy

The Summit was made possible through the support of the Long Island Community Foundation, United Way of Long Island, and the Support Center for Nonprofit Management.

Funding from the Rauch Foundation has enabled the Summit steering committee to develop a business plan for a proposed Long Island Center for Excellence in Nonprofit Leadership. A collaborative initiative, the Adelphi-based Center would focus on executive transitions and leadership and board development. **A**

BY OLIVIA WINSLOW
Newsday Staff Writer



Marine Corps Maj. Adam McKeown, standing, teaches an Adelphi class in Shakespeare in Djibouti.

GLOBAL THEATER

Whether 'tis nobler to learn?

Inside a tent in the desert of northeastern Africa, an English professor from Adelphi University has been teaching Shakespeare.

There, at Camp Lemonier, Djibouti, the professor, U.S. Marine Corps Maj. Adam McKeown – winner of Adelphi's 2005 Teaching Excellence Award – has engaged some two dozen fellow military personnel and civilian contractors in a survey course on the Shakespeare canon. Together, they have read "The Merchant of Venice," "A Midsummer Night's Dream," Hamlet, "Julius Caesar" and "Titus Andronicus."

McKeown, a reservist, is serving as an adjutant in the Marine Corps Forces Central Command. In a telephone interview, he said some of the college students he serves with could lose a year of studies while deployed on military duty.

"This is a way for them to keep their head in the game, feel like they're working toward their goals," he said. Besides, he added, "As an officer and a professor, it really is all about helping out that group of people" – meaning the 18- to 23-year-olds in his class.

McKeown asked Adelphi, where he has been on the faculty since 2002, if it would support the course, and the university agreed. Of the 27 students enrolled, he said 23 took the three-credit course for free from Adelphi. Final papers were due last Monday.

"We thought, let's give the tuition to the soldiers," said Gayle Insler, dean of Adelphi's College of Arts and Sciences. "They're serving the country, and we're trying to support them any way we can."

McKeown also received donations of Shakespeare texts from Simon & Schuster publishing company and the Folger Shakespeare Library in Washington, D.C.

His classroom is a tent the color of sand and is "set up in the middle of a big desert." And outside, it's hot.

It's the coolest part of the year in Djibouti, and the temperature still tops 100 degrees on many days, he said. Generator-supplied power makes air-conditioning possible. So, he said with a chuckle, "it's not that bad."

McKeown said his students still face a grueling task. They are tackling the works of Shakespeare while on call in what he described as the third theater in the United States' "War on Terror."

His own day begins at 5 or 6 a.m., he is at his post at 7 or 8, and he teaches the 15-week course two days a week for an hour and 15 minutes. The class meets at 7:30 p.m., at the end of a long day for the people assigned to Camp Lemonier.

"They are tired, that's the thing I would stress," he said. "They're often returning from dangerous work, and they're trying to sneak in a Shakespeare class."

It's inspirational to McKeown, and he hopes to return to Adelphi next month if his six-month deployment is not extended. "It's a pleasure for me to have a skill that I can contribute to the young people who are bearing the burden of the global war on terrorism," McKeown said. "It's a real pleasure to be around those kind of dedicated young people to make their experience a little more positive." **A**



First-year students visit Fire Island Lighthouse as part of new LET'S GO program.

Let's GO!

Exploring a lighthouse and collecting seashells with your business professor?

No, it's not a new course in Long Island real estate. As part of Adelphi's new LET'S GO! Program, freshmen have the chance to escape the classroom and engage with faculty and classmates alike while attending a Broadway show, visiting the zoo, or even scaling a rock climbing wall.

Most students know Associate Professor Maryanne Hyland as an expert in human resources, but few know that she finds lighthouses "inspiring" and that she is knowledgeable about shore life—"everything from houses to horseshoe crabs." On a sparkling October day, she and seven freshmen toured the Fire Island Lighthouse and the related museum, and walked to town for lunch via the beach.

Assistant Professor of Music Sidney Boquiren saw the program as a great opportunity for students to take advantage of Adelphi's proximity to New York City. He and a group of

first-year students attended a New York Philharmonic concert, followed by coffee at a local café. Performing Arts Department Chair Nicolas Petron M.A. '70 and several students explored the historical Tenement Museum on the Lower East Side and ate lunch at the famous Katz's Deli. Assistant Professor of Sociology and Anthropology Deborah Little joined eighteen freshmen for a performance of the acclaimed musical RENT.

The brainchild of Provost and Senior Vice President for Academic Affairs Marcia G. Welsh, the LET'S GO! Program was developed by the First Year Experience Committee and received rave reviews from students and faculty members. Professor Petron calls the program "brilliant," saying, "We get so isolated on campus, we're all so busy all the time. Reaching out to students and providing them with new experiences is a great thing." **A**

Did You KNOW?

The hit musical RENT by Jonathan Larson '82 was recently made into a major motion picture. Released in November 2005, the film featured several of the original Broadway cast members and received wide critical acclaim.



Alumni across the country were invited to special previews arranged by Sony Pictures, with screenings in New York, Hollywood, Miami, San Francisco, and Washington D.C.

The DVD release includes an interview with Performing Arts Department Chair Nicholas Petron M.A. '70 as well as campus photos.

Adelphi University Magazine

was honored with a Gold Accolade Award from the mid-Atlantic district of the Council for the Advancement and Support of Education. The award recognized the magazine for its excellence in content, writing, and design among similar publications at four-year universities across Maryland, New Jersey, New York, Pennsylvania, and Washington, D.C.

Last fall, the Class of 2006 recognized thirty-two faculty members with Adelphi's first-ever Distinguished Faculty Excellence Awards. The chosen professors were honored for their high standards and dedication to teaching. **A**