



Vol. 25, SPRING 2015

ADELPHI UNIVERSITY NEWS TRANSFER STUDENTS LETTER

FOCUSING ON TRANSFER STUDENT SUCCESS

FOR STUDENTS AND ADELPHI UNIVERSITY'S PARTNERS IN HIGHER EDUCATION



WELCOME TO THE FUTURE: STUDENTS FORESEE CAREER BOOST FROM NEXUS SIM LABS

by James Forkan

A number of factors stand out as important in the formation of a nurse. Several nursing majors in the College of Nursing and Public Health, including transfer students Kimberly Korn, Sabrina Levy and Chrystal Teran, now seniors, were quick to cite the role that simulation labs played in their nursing development.

Nursing students lucky enough to start in Fall 2015 will be among the first to take advantage of state-of-the-art technology in the new Nexus Building and Welcome Center's sim labs and examination rooms—

capabilities well beyond what's now available in Alumnae Hall. As College Dean Patrick Coonan, Ed.D., has said, Nexus will contain "an intensive care room, a delivery room and even a home-care lab set up like someone's house."

Korn cited the importance of the sim labs to nursing students' growth. "We learned how to provide nursing care to the SimMan, using IV piggy backs, wound dressings, Foley catheter care, trach care and much more."



Senior Cassandra Campo recalled her sim lab experience was "the first time I realized I was going to be working with real people [as a nurse]. Once out of the sim lab and on a clinical floor, I was very happy that I had practiced these techniques in the lab first before [doing so on] a living patient."

Continued on page 10

I N S I D E

- 3 TALK BACK
- 4 BUSINESS INTERNSHIPS PROGRAM
- 5 TRANSFER BUSINESS AWARD
- 6 FOCUS ON FACULTY
- 7 TRANSFER COUNSELORS CORNER
- 8 TRANSFER STUDENT PROFILES
- 11 SUFFOLK CENTERS

**TOP 10 LISTS
WHERE ADELPHI TRANSFERS
COME FROM***

SENIOR COLLEGES

- Hunter College (City University of New York)
- Touro College
- Farmingdale State College (State University of New York)
- St. John's University
- Queens College (City University of New York)
- Stony Brook University (State University of New York)
- Medgar Evers College (City University of New York)
- Molloy College
- LIU Post
- New York City College of Technology (City University of New York)

COMMUNITY COLLEGES

- Nassau Community College
- Suffolk County Community College
- Queensborough Community College
- Borough of Manhattan Community College
- LaGuardia Community College
- Kingsborough Community College
- Dutchess Community College
- Westchester County Community College
- Rockland Community College
- Ulster County Community College

* In descending order, based on Spring 2014, Fall 2013 and Spring 2013, tabulated by Adelphi's Office of University Admissions



ESTHER GOODCUFF
Associate Vice President for
Enrollment Management
and Student Success

**THINKING BACK,
LOOKING AHEAD**

The personal stories of the transfer students included in this semester's newsletter are ones that resonate with me as a transfer student myself (from Nassau Community College to Adelphi University)—even though, admittedly, my transfer experience occurred many years ago.

Some things never change, however. I, too, was excited to embark on a new experience, while feeling a certain level of anxiety about making the change. Living in Nassau County and having earned my associate degree at Nassau Community College (NCC), I was sure that I wanted to go away to school to complete my bachelor's degree. I did lots of research about four-year institutions with an eye toward leaving Long Island.

There was just one kink in the process. I was sure I wanted to become a social worker and nearby Adelphi simply had the most outstanding reputation in this program.

You know the rest of the story. Adelphi's social work program trumped all else (I am awfully practical!) and I received my B.S.W. two years after graduating from NCC. I have never regretted my decision, truly loving every moment of a program that was challenging and enlightening—one that pushed me out of my comfort zone to grow in so many ways.

And here I am, still a member of the Adelphi family. It is now my turn to welcome new transfer students just as I was welcomed years ago.

Regards,



NEWSLETTER STAFF

EXECUTIVE EDITOR

James Forkan

EDITOR

Esther Goodcuff

DESIGN

Sarah McCay

CONTRIBUTORS

James Hoyt, Ph.D.
Brett H. Spielberg '13
Efe Tanci

Transfer Students Newsletter is published twice a year by the Office of Marketing and Creative Services.





TALK BACK

— Email transferfocus@adelphi.edu

IN EACH ISSUE, WE INSERT A SURVEY POSTCARD TO ASK FOR YOUR INPUT.

A prospective transfer student requested information about scholarships.

We included Web links to information on Adelphi's many general transfer scholarships and financial aid on the Talk Back page in our Fall 2014 issue. Here's some additional info on scholarships specific to business transfers, culled from a letter sent out by the Robert B. Willumstad School of Business in November 2014.

Sent to more than 300 community college contacts by Erin Raia, director of undergraduate business programs at the Willumstad School of Business, the letter called attention to various scholarship incentives available to business transfers with associate degrees.

For example, she said:

- Full-time students are eligible for transfer merit awards ranging from \$6,000 to \$11,000.

- Part-time students are eligible for transfer merit awards between \$1,500 and \$3,500.
- Awarded students who maintain undergraduate transfer merit scholarships will have these scholarships applied toward the cost of their M.B.A., if they begin graduate studies at Adelphi immediately after their bachelor's degree.
- Based on GMAT scores, additional scholarships can be added toward the M.B.A., ranging from \$1,000 to \$5,000.
- Students who complete their bachelor's degree in a business discipline at Adelphi may receive waivers in as many as 33 credits toward the 66-credit M.B.A. program—thereby "realizing substantial savings in both tuition costs and time to completion," Raia said, as long as their grade is B or better in each undergraduate business course. Transfers could, in fact, complete both baccalaureate and M.B.A. degrees in just three years of full-time study.

For details, contact Raia at eraia@adelphi.edu.

NEW UNDERGRADUATE TRANSFER ENROLLMENT AT ADELPHI UNIVERSITY FALL 2014, BY SCHOOL

206

College of Nursing and Public Health

96

College of Arts and Sciences

63

Robert B. Willumstad School of Business

53

University College

33

Ruth S. Ammon School of Education

33

School of Social Work

26

Gordon F. Derner Institute of Advanced Psychological Studies

510

TOTAL

Source: Fall 2014 Data Book

ON THE RISE

In his State of the University speech in September 2014, Adelphi President Robert A. Scott cited a number of strong statistics.

"In the past 13 years," he said, "we have constructed or completely renovated

500,000

square feet of instructional, performance and recreational space,

with another

100,000

square feet of new institutional and academic support space to be completed by [Fall 2015]." (The latter is a reference to the Nexus Building and Welcome Center.)

In the same time span, Adelphi has increased faculty from under 200 to nearly

340

and grown undergraduate enrollment by

63%,

Dr. Scott added.



GETTING A HEAD START ON A CAREER

by James Forkan

"The internship program has exploded," said Neil Halloran, the internship coordinator at the Robert B. Willumstad School of Business since March 2014.

"Since May 1, we have placed 250 interns," he said in December 2014. "About 98 percent of our internships are paid."

Halloran, a senior adjunct professor at Adelphi for more than 10 years, has been developing the necessary infrastructure and streamlining the process of applying for internships. "There were no records prior to my taking over the internship program," he noted. Having a formal program with better records within the School, he believes, will make the process measurable.

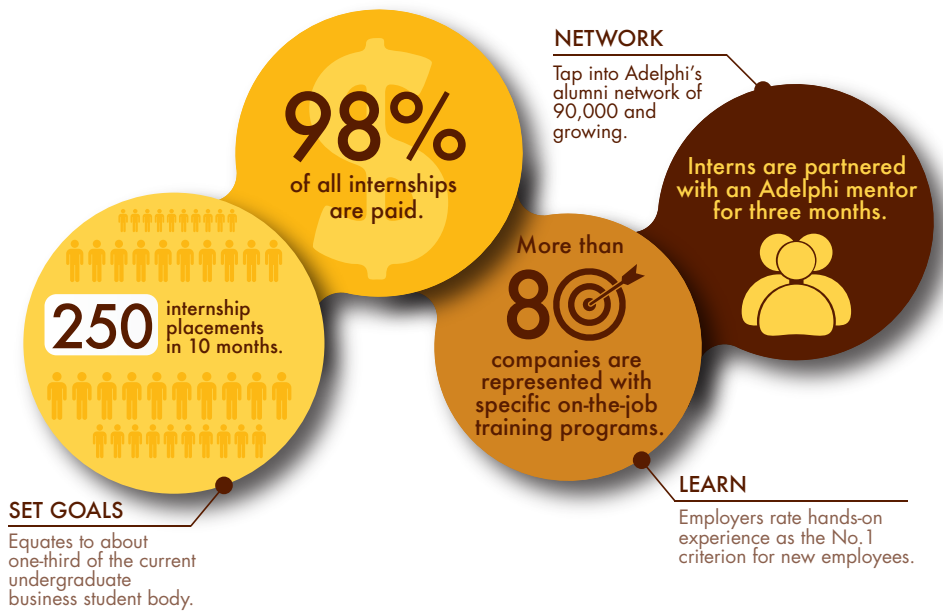
The emphasis on the importance of internships comes from the top. "Internships are essential," Adelphi President Robert A. Scott said during his State of the University speech in September 2014. "Students thrive academically when they study that for which they have a passion. An internship can help them prepare for life after study."

On a practical level, Halloran observed, "Internships are currently being viewed by employers as the No. 1 criterion in placing people into the job market."

Summarizing his key advice to students, Halloran said, "Learn, question and work hard in the organization. Build yourself a brand and reputation. The result may be getting hired in the firm and/or building your professional business experience."

Halloran, who has placed students at such companies as Merrill Lynch, IBM, Gap Inc. and MakerBot, said the number of participating companies has topped 80, up from 40 last spring—some featured on the new internship website he developed for the Willumstad School. Outlining his procedure, Halloran said, "I screen each student and request a résumé during my screening. I log in each intern candidate and prepare them for each interview for an open position."

Halloran said that Rupinder Kaur '14, who has interned for Merrill Lynch, is now doing so at Penn Mutual, as is Danielle Clark, a senior marketing major. Citing other examples, he added that Stacy Saul (a Nassau Community College transfer) is working as a social media/marketing intern at FragranceNet.com, which sells fragrances and skincare products online, while Michael Tarone is an intern for Muscle Milk, which markets protein products in ready-to-drink, powder and energy bar forms.



Saul said, "I assist in Instagram, Twitter and Facebook posts and contests and help send out letters to contest winners. I also write blog posts on our site about different products we sell and assign new tags to products to optimize consumer experiences."

Saul, due to graduate in December 2014, added, "Mr. Halloran played a huge part in helping me obtain this internship and even helped me with résumé tips and interview questions. He gave me great advice and made the process of finding an interesting internship very easy."

Clark, due to graduate in May 2015, is interning in marketing and life insurance at Penn Mutual. As Halloran had promised, her internship is "a great learning experience—not running around getting coffee." He helps build his interns' résumés and preps them for interviews "so we will be more comfortable," she added.

Kaur, now working toward an M.B.A. specialization in accounting in May 2015, described the Merrill Lynch internship as "absolutely amazing. It helped me develop strong people skills." She added, "All my interviews went very successfully. Due to my experience at Merrill Lynch and Penn Mutual, I already have an offer from a prestigious CPA firm."

Besides training in a business environment, Halloran's interns benefit from having him as a mentor. "We are currently mentoring 20 interns for a three-month period of time," he noted.

Rahat Jalil, a senior business management major who interned at GEICO in Summer 2014, praised Halloran's mentorship, saying, "His monthly meetings provided me an opportunity to expand my critical thinking abilities."

The mentoring program gives the interns direct access to Halloran's 20 years of experience with IBM in various management positions. After IBM, he became director of corporate and executive training for 1-800-Flowers.com, where he was recognized by *Forbes* for his accomplishments in training—and then formed Halloran & Associates, Inc.

SCHOLARSHIPS MAKE A DIFFERENCE

"Money makes the world go around," according to song lyrics in the Broadway musical *Cabaret*. Money—in the form of transfer scholarships—also provides a considerable assist for transfers enrolled in the Robert B. Willumstad School of Business.

The most recent addition to the bundle of transfer scholarship dollars for business students is the Robert B. Willumstad Transfer Business Award.

More than 30 business transfer students were chosen to receive that award, said Sheryl Mihopoulos, assistant vice president, Office of Student Financial Services. Each of these students will receive \$1,000 a year toward their tuition, with the scholarship also applicable toward their M.B.A., she said.

Elijah Shabazz, Brian Thompson, Lawrence Nicolas and Nathalie Horta are among

the first 30 award recipients, each on his or her own career path. Shabazz and Thompson, for instance, are Nassau Community College transfers—the former a finance major on the Panthers lacrosse team and the latter a business management major—while Nicolas transferred from Queensborough Community College to major in business administration and Horta is an accounting major who came from Suffolk County Community College as a 2014 Stay on Long Island Initiative recipient.

All are Spring 2014 admitted transfers who declared a business major and are attending Adelphi's Willumstad School full time as of the Fall 2014 semester. The scholarship—which can be applied toward their M.B.A., if they continue immediately after obtaining their bachelor's degree—was announced in the Fall 2013 *Transfer Students Newsletter*.



Robert B. Willumstad (left) with a student in the James Riley, Jr., trading room at the Hagedorn Hall of Enterprise



BOOK 'EM

Adelphi University Libraries offer students free access to about 80,000 multidisciplinary e-books. These eBrary books can be accessed anywhere. (Details at libguides.adelphi.edu/ebrary)

Adelphi librarians can now answer your questions via Librarian Chat, AU Libraries' online chat service at libraries.adelphi.edu/students/ask-a-librarian.

Generally, a librarian is available on chat whenever the Reference Desk is open. To get help, you can also email referenceservices@adelphi.edu or phone **516.877.3574**.

Moreover, the newly renovated Swirbul Library now houses a 3D Studio with both large- and small-scale Makerbot printers and workstations for 3D projects. (Details at it.adelphi.edu/catalog/3d)

Swirbul is exhibiting *Infinite Imagination in 3-D* through April 11, 2015. During this exhibition in the Swirbul Library entrance, more than a dozen figures produced by 3-D printers are on display.



Visitors are welcome!

FOCUS ON FACULTY: Kenneth C. Rondello College of Nursing and Public Health



From the Ivy League to ground zero, Kenneth C. Rondello, M.D., M.P.H., has spent his life like every Eagle Scout was taught to, trying to leave

the campsite—in his case, the world—a better place than he found it.

The chair of the College of Nursing and Public Health's Department of Allied Health and the academic director for the Department of Emergency Management, University College (UC), Dr. Rondello is, in his own words, a man with three hats.

He wears his third hat as a member of the Disaster Medical Assistance Team (DMAT) NY-2. As such, he has responded to some of the most catastrophic natural and man-made disasters in the country—and volunteered for Doctors Without Borders, taking countless trips across the globe to help others in need.

"As a student, I always respected and admired the professors most who were the ones still doing what they taught, not just teaching from

a textbook," Dr. Rondello said. "I promised myself were I ever to become a professor myself, I'd never stop doing what I was teaching to keep me sharp."

Dr. Rondello earned a Master of Public Health at Yale University in 1994. At St. George's College in the United Kingdom in 2000, he became a medical doctor and an epidemiologist.

In 2004, he taught his first class: Health Management in Times of Disaster, something he only expected to teach for that one semester—but still does 10-plus years later. By 2005, he was a full-time professor at Adelphi.

"After so many years [14] as a student, I'm very comfortable in the academic environment," he said. "I appreciate Adelphi's forward thinking letting me live the hybrid life that I do."

Specializing in alternate medical treatment stations (ATMS)—also known as alternative care facilities (ACF)—Dr. Rondello practices, teaches and studies the science of converting a space into a medical facility.

After Hurricane Ike ravaged eastern Texas in 2008, Dr. Rondello was deployed with DMAT NY-2 to establish facilities for patients who gravely needed medical attention. There, on



the scene, he taught one of his courses live via satellite out of a grocery store he and his team had converted into a functioning hospital within 24 hours.

Along with his response to Ike and 9/11, plus numerous other trips across the country, Dr. Rondello volunteers his own time over academic breaks to Pro World, Global Aware, the Yale Alumni Service Corps and Doctors Without Borders. Since 2009, he has taken nearly a dozen trips—from Haiti and Belize to Ghana and Nepal—to volunteer in various ways.

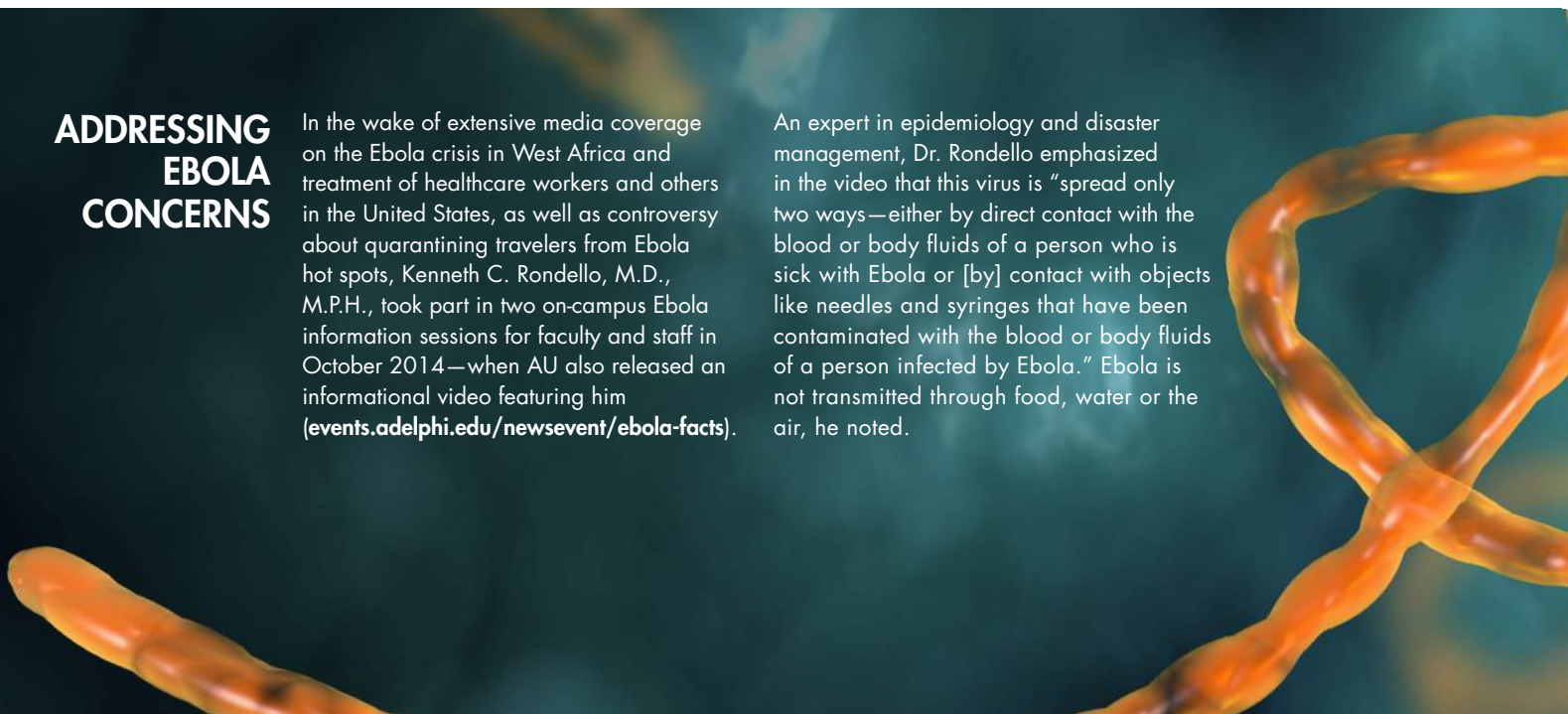
Dr. Rondello has continued on through scorpion bites in the rainforest and cholera and malaria outbreaks in Haiti and Ghana to live by that Eagle Scout code he learned two decades ago: leaving the world a better place than he found it—and, in the process, establishing a legacy that the Adelphi community can be proud of.

—Adapted from a University College Spring 2013 Web profile by Brett H. Spielberg '13

ADDRESSING EBOLA CONCERNS

In the wake of extensive media coverage on the Ebola crisis in West Africa and treatment of healthcare workers and others in the United States, as well as controversy about quarantining travelers from Ebola hot spots, Kenneth C. Rondello, M.D., M.P.H., took part in two on-campus Ebola information sessions for faculty and staff in October 2014—when AU also released an informational video featuring him (events.adelphi.edu/newsevent/ebola-facts).

An expert in epidemiology and disaster management, Dr. Rondello emphasized in the video that this virus is "spread only two ways—either by direct contact with the blood or body fluids of a person who is sick with Ebola or [by] contact with objects like needles and syringes that have been contaminated with the blood or body fluids of a person infected by Ebola." Ebola is not transmitted through food, water or the air, he noted.



TRANSFER COUNSELORS CORNER

A Community College Perspective

Use Your Five Senses

Each year, about 3,000 students graduate from Nassau Community College (NCC) with their associate degrees. A large number of those graduates go on to four-year institutions. That means our Transfer Counseling Office gets lots of traffic—and lots of questions. Whenever I speak with these students, I encourage them to use their five senses in navigating the transfer process. What are these senses, and how do you use them?

- **A sense of self**—What you want to study and where you want to do it are among the most difficult questions to answer when thinking about transferring. Besides your major, do you want a SUNY school, a CUNY school or a private school? How far away do you want to go? Urban or rural? Will you do better in a small-school environment or are you looking for all the resources and opportunities that a large university will offer.
- **A sense of responsibility**—It is your decision. You should get advice from faculty, counselors, friends, your parents and others—but, ultimately, the choice is yours.
- **A sense of excitement**—It is natural to be a little nervous about the transfer process. You have grown very comfortable at your present institution. Research has shown that you will be welcomed at your next institution and that you will do just

fine academically. Take some chances! Don't automatically accept self-imposed limitations, such as the academic difficulty or overall cost of attending an institution. You may be pleasantly surprised. The application process itself can be a wonderful learning experience if it makes you really think about what you are looking for at your next institution.

- **Common sense**—Pay attention to application deadlines. Many institutions have rolling admissions deadlines for some programs, but other programs may be very competitive. Make sure to send transcripts from every institution you have attended and a final transcript from your last institution, with your degree posted on it, if appropriate. Make sure you visit the institutions you are considering. Be sure to complete the Free Application for Federal Student Aid (FAFSA).
- **Dollars and sense**—Don't let cost be your only guide. Many private institutions will offer generous scholarships based on your grade-point average and other factors. Transfer students have become an increasingly important population in higher education over the past three decades. Students are getting the attention and services they deserve and the process has become easier now that most institutions have dedicated transfer admissions counselors and, often, offices of transfer services, as well as articulation agreements, scholarships and the like.

The key to making the process work better is getting your associate degree. While most institutions will accept students before they finish the degree, credits will transfer better, general education requirements may be met and you may be eligible for additional scholarships if you complete the associate degree.



by James Hoyt, Ph.D.
Transfer Coordinator
Nassau Community College

James Hoyt, transfer coordinator in NCC's Transfer Counseling Office since 2011 and transfer counselor before that, said he developed the five senses approach to transfer during his 30-plus years at NCC. Dr. Hoyt, who earned a Ph.D. from New York University, is also an adjunct mathematics professor at the community college.

30% of Students Transfer

$\frac{1}{3}$ of all college students transfer at least once before earning a degree, according to the National Student Clearinghouse Research Center, which noted that transferring tends to peak during students' second year.

About 60% of those transferring from a two-year to a four-year college graduate with a degree within four years of transferring, the Herndon, Virginia-based research center added.

The National Association for College Admission Counseling in Arlington, Virginia, has published similar transfer research findings.

At Adelphi 54% of undergraduate students entered as transfer students. That's up significantly from 2009, when 40 percent of undergrads began as transfers



Adelphi has become my home away from home. I've never felt so comfortable and independent.

REBECCA SINGH ENGLISH MAJOR Transferred from LIU Post

Rebecca Singh, a junior English major who said the Spring 2014 semester was her first at Adelphi, has become quite active during her relatively short time on campus.

Singh is the current president of the South Asia Student Association, which, she pointed out, is "open to any student of any ethnicity. We aim to spread the South Asian culture by engaging students in different events, activities and community service throughout Adelphi." As president, she said, "I work on getting everyone in the organization to understand, embrace and enjoy their culture, as well as the South Asian culture."

Besides the club, Singh is involved in Sikhs United, the Muslim Student Association, the Student Activities Board and the English Honor Society.

Singh, who switched from LIU Post to Adelphi's College of Arts and Sciences, described her transfer experience as "very liberating." She explained, "Adelphi has become my home away from home. I've never felt so comfortable and independent. Thus far, transferring has been one of the best decisions I've ever made because there are so many opportunities to take advantage of." In addition, she said, "Adelphi has benefited me socially, as an individual, and has given me a newfound perspective in my career path, as an aspiring journalist."

She hopes to eventually work at *The New York Times*—and, toward that goal, plans to apply to the newspaper's internship program in Summer 2015.

LISA RAMPERSAUD SOCIAL WORK MAJOR Transferred from St. John's University

by Efe Tanci

In Fall 2012, Lisa Rampersaud transferred from St. John's University after hearing about Adelphi's inspirational social work program and is now in her senior year of the bachelor's degree program.

Due to graduate in May 2015, she said she then intends to pursue an M.S.W. As for career plans, she said, "I am interested in school and hospital social work. In the future, I would also like to get my LCSW and focus on private practice."

It is never easy to adjust to a new environment but Rampersaud has been through it herself and now helps ease the transitions of new transfers.

As one of four 2014–2015 transfer ambassadors, Rampersaud participates in Transfer Transition, an orientation event organized to familiarize transfer students with their new surroundings. She also organizes monthly events, such as game night, an ice cream social and a T-shirt swap in which transfer students traded in their former college T-shirts for Adelphi's.

During these events, transfer students not only socialize and make friends but also get the opportunity to ask transfer ambassadors about Adelphi's academics and campus activities in order to make their transition that much smoother.

Rampersaud has this advice for prospective transfers: "Definitely do your research and visit the campus before transferring. That is the key to a successful transfer that will satisfy your expectations."

Rampersaud, who served as transfer senator and Social Work Action Gateway treasurer in 2013–2014, also has been a commuter assistant as well as a member of Philanthropic Action in Challenging Times, the Tau Sigma Honor Society for transfer students, Phi Alpha Honor Society and Sigma Lambda Leadership Honor Society.

Clearly, she has taken another piece of her own transfer advice quoted on the transfer ambassadors' Web page—"I love how welcoming the Adelphi community is... Getting involved on campus is the easiest way to make new friends and explore your interests"



Getting involved on campus is the easiest way to make new friends and explore your interests

DEAN O'RILEY TOUTS UNIVERSITY COLLEGE'S ATTRACTIONS



For more than 40 years, University College—Adelphi's college for working adults—has drawn those adult students to complete their undergraduate degrees and achieve their professional, personal and academic goals.

The College has many attractions for prospective transfers and working adults. A key one is flexibility. "[The College] offers a wide variety of degree and certificate programs that can be completed in a number of different ways, including nights and weekends, as well as online, blended and accelerated formats," Dean Shawn O'Riley, Ed.D., said.

In addition, he said, admission to University College is "simple and straightforward. Applicants need not have taken an SAT to apply. UC also provides credit for life and work experiences through our Prior Learning credit program."

Dr. O'Riley also noted that University College "provides a single point of contact for advising, from your first contact with us through graduation. UC has articulation agreements with many local community colleges and provides personalized transfer credit evaluation that can be completed quickly and efficiently."

More than 7,000 University College graduates have gone on to careers in business, social services, healthcare, education and more. For more information, visit uc.adelphi.edu, call **516.877.3412** or email ucinfo@adelphi.edu.

KRISTEN CAREW ENVIRONMENTAL STUDIES MAJOR Transferred from Queens College

Kristen Carew, a College of Arts and Sciences senior who transferred from Queens College, is putting her longtime passion for environmental awareness, climate change and sustainability into practice as an environmental studies major.

She's also president of Adelphi's Habitat for Humanity chapter and vice president of the Environmental Action Coalition. In addition, she serves as a peer assistant leader for incoming students.

Environmental studies is a fast-growing field that can lead to numerous career paths, a fact that can be overwhelming for some students. But Carew has not felt any of the pressure. "My professors and advisers have guided me all along to help me make the right decisions that are best for me," she said.

As a freshman in Queens College, she didn't care for attending numerous classes in a 300-seat lecture hall. In a sea of faces, professors identified the students only by their Social Security number. She transferred to Adelphi's College of Arts and Sciences in her freshman year.

Carew, who enjoys the personal, welcoming atmosphere at Adelphi, said of the faculty and advisers, "Their doors are always open and they are more than happy to sit down and talk with me and help me figure out what my goals are, and how to reach them."



“My professors and advisers have guided me all along.”

MAKING IT EASY: TRANSFER CREDIT EQUIVALENCIES ONLINE

Adelphi University offers the Transfer Evaluation System as an online resource for our prospective transfer students. By using this tool, prospective transfer students will be able to access course equivalencies from their institution and see how they will transfer to Adelphi.

To determine transferability of credits to Adelphi, visit admissions.adelphi.edu/transfer/how-to-apply/evaluating-transfer-credits.

Continued from cover

Levy, who pointed to the experience she gained throughout her clinical rotations in St. Francis Hospital as being the primary influence in her Adelphi education, called the sim labs “incredibly helpful.” Why? “These labs give students the necessary hands-on nursing experience before getting into clinical rotations in the hospital,” she explained. “These skills include head-to-toe assessments, medication administration and interactions with lifelike patients.”

Teran agreed that healthcare is constantly evolving—“but more so these last few years.” The College, she said, “supplements our knowledge with up-to-date, efficient tools used in the clinical areas, but it is the professors in particular who really help us prepare for the upcoming challenges,” such as the shift to electronic medical records.

Noting that she began using sim labs in her third year in the Fundamentals of Nursing course, Teran said, “These labs were pivotal to my education because they are our practice patients. This is the place where we can experiment, ask questions and try our hand at the technical aspects of nursing.”

Eyeing graduation in May, she said, “I will be continuing my education to become either a nurse practitioner or nurse anesthesiologist.” She is now considering Adelphi’s College when she pursues an M.S., due to the advanced technology and sim labs that the new building will provide.

Samantha Avila ’14, another transfer, considered the simulation labs in Alumnae Hall “very important for my nursing education because they allowed me to get more comfortable for assessments before I had to walk into a human being’s room. They truly helped calm my nerves and anxiety.”



Although she started using the sim labs during her assessment classes in junior year, she believes that it would be even more beneficial for students to be exposed to them sooner. “That would give them even more time to be comfortable with assessments on real patients.”

Adelphi has prepared her well for the healthcare challenges she and other graduates will now face, Avila added. “I feel very lucky to have had the opportunity to be a part of Adelphi’s dedicated education unit cohort at North Shore University Hospital. That experience opened my eyes to what a nurse truly does during a 12-hour shift.”

Eileen Balzac, a junior who is not a transfer, said, “I have learned a lot this year about how healthcare is changing, especially in my Informatics class.”

Although she has not yet used the Alumnae Hall sim labs, Balzac considers them “extremely valuable to my nursing education because they make learning about the clinical setting more realistic.”

She and other nursing students have been told that the ultramodern Nexus Building sim labs will be more high-tech than those in Alumnae Hall. “I’m looking forward to all of the new rooms [Nexus] will offer,” she said. “The more realistic settings will better prepare me for my career.”

— Adapted from an article in the Fall 2014 *Illuminations*, the College of Nursing and Public Health newsletter

PROGRAMS OF STUDY AT ADELPHI

For information on undergraduate programs of study offered through Adelphi University’s various schools, visit catalog.adelphi.edu.

Go to the same link for details about Adelphi’s pre-professional tracks as well as joint degree programs in dentistry, engineering, environmental studies, optometry, physical therapy and podiatry.



SEEING IS BELIEVING: TAKE A CAMPUS TOUR

Reading about Adelphi is a great way to learn about us, but visiting our campus is the best way to experience Adelphi.

See for yourself. Stop in for a visit. Talk to an admissions counselor or just stroll around our picturesque Garden City campus, a 75-acre registered arboretum filled with outdoor sculpture, bustling with students and featuring our modern Performing Arts Center and Center for Recreation and Sports, as well as our newest residence hall.

Email tours@adelphi.edu to schedule a campus tour.

CAN’T MAKE IT TO CAMPUS? Check out our new interactive campus map at map.adelphi.edu.

SUFFOLK CENTERS ADDING PROGRAMS FOR NURSES, VETS

Come Fall 2015, Adelphi University's Suffolk Centers will offer new master's degree programs in nursing and new bachelor's degree programs for veterans.

So said Linn Cartagena, Adelphi's associate director of Suffolk County centers and head of the program at Sayville Downtown Center.

The number of Registered Nurse to Bachelor of Science (R.N. to B.S.) in Nursing students in Sayville has soared to 95, she pointed out. That's up sharply from 17 in Fall 2012, when it began as Adelphi's first program there.

Sayville's first R.N. to B.S. cohort graduated in May 2014. All told, 22 students graduated through December 2014. "Our students range from seasoned professionals to recent community college graduates," Cartagena said.

"One of the key factors in both attracting students and the retention of the students is the personal service and care they receive. We meet with each and every student each semester to not only plan their schedules but to review where they are going and how the semesters are going.

"We have a strong cohort looking to move on for their master's once they have completed their B.S. degrees....We're currently looking to start a master's program for the graduating students at the University's Hauppauge Education and Conference Center," she said.

That will start in September 2015 with master's degree programs in nursing administration and public health, she added.

"We are also looking to begin a new program in Fall 2015 for veterans in Suffolk who want to get their bachelor's degree," she said. That will be in Sayville, she said, "with hopes that they may move on to Hauppauge for social work graduate studies or to Garden City for other areas of grad school. The concentration will be on the University College social science degree, although we are also looking into the possibility of emergency management."



TRANSFER ALUMNI: PROFILES IN SUCCESS

After graduation from Adelphi, our transfer alumni have advanced to successful careers in a wide range of fields.

Shahram Hashemi '05

An Honors College finance major who earned a master's degree at Columbia University, Shahram Hashemi '05, went from organizing a chapter of Amnesty International at Adelphi to becoming an executive at Amnesty International USA—chairman of its National Advisory Council since July 2013, Amnesty International USA chairman of the board in 2012–2013 and, for five years before that, its treasurer. The Iranian-born human rights activist's sense of purpose was forged by vivid childhood memories of the Iran–Iraq war in the 1980s and by his role in helping survivors and firefighters amid the 9/11 World Trade Center tragedy while a student at LaGuardia Community College. In May 2003, he organized and moderated a live teleconference discussion linking students at Adelphi with those at Tehran University.



Diane (Badagliacca) Powell '72, M.B.A. '89, A.N.P. '98

An English major at Queens College, Diane (Badagliacca) Powell '72, M.B.A. '89, A.N.P. '98, transferred to Adelphi and switched to nursing. "Even as a transfer student, I immediately felt at home," she said. In 1970, a nursing professor inspired her to help organize the first Earth Day at Adelphi, she recalled. Powell, a onetime faculty member at Adelphi's School of Nursing (now College of Nursing and Public Health), marketing consultant for the National League for Nursing, manager of professional relations for Johnson & Johnson and vice president/account supervisor at medical/pharmaceutical ad agencies, joined the North Shore-LIJ Health System in 2001 as a registered nurse case manager at Long Island Jewish Medical Center.





ADELPHI UNIVERSITY
 OFFICE OF ENROLLMENT MANAGEMENT
 AND STUDENT SUCCESS
 One South Avenue
 P.O. Box 701
 Garden City, NY 11530-0701

Non Profit
 US Postage
PAID
 Adelphi University
 New York

CALENDAR OF UPCOMING TRANSFER ADMISSION EVENTS

(All events are on the Garden City campus.)

TRANSFER ADMISSION DAYS	TRANSFER REGISTRATION DAYS	TRANSFER INFORMATION SESSIONS
Tuesday, April 7, 2015	Monday, April 27, 2015	Saturday, May 9, 2015
Thursday, April 9, 2015	Monday, July 20, 2015	Saturday, June 20, 2015
Tuesday, June 16, 2015	Monday, August 17, 2015	Saturday, July 25, 2015
Thursday, June 18, 2015		Saturday, August 22, 2015
Tuesday, August 11, 2015		
Thursday, August 13, 2015		

Visit admissions.adelphi.edu/transferevents to register and find out more about these events.